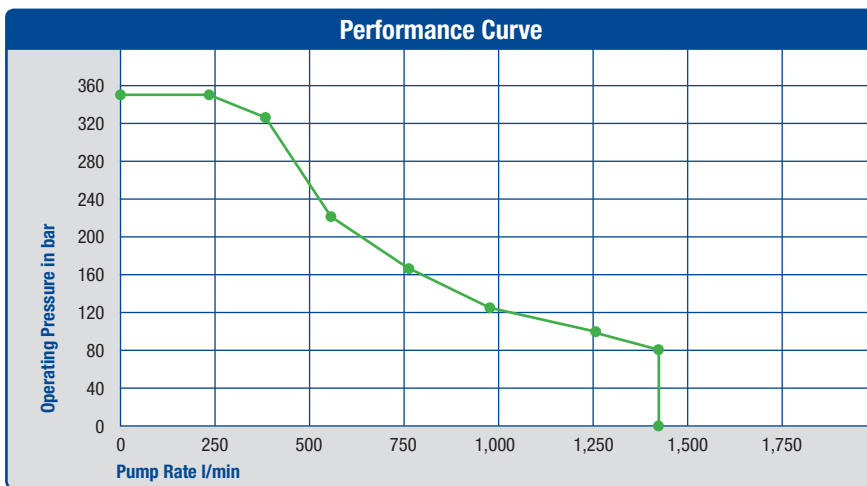
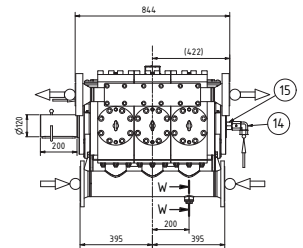
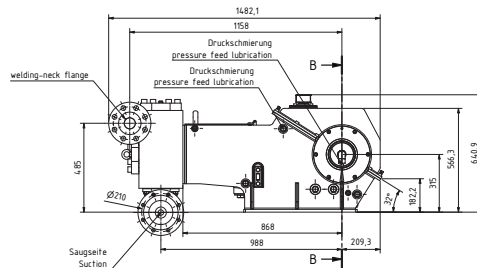
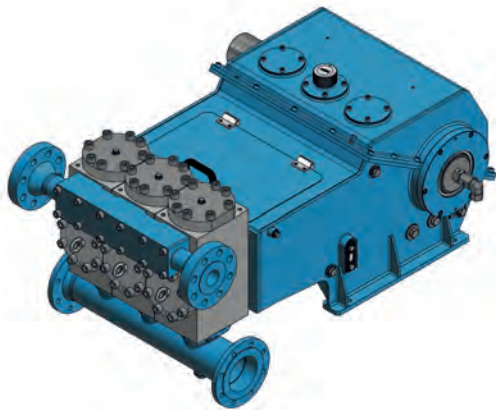


# HDD Mud Pump PSE 50-127

Compact high-capacity pump for drilling fluids operating at pressures up to 350 bar.



**Dimensions**

L Total Length	1,482 mm
F Length only power end	520 mm
H Total Height	655 mm
B Total Width	1,131 mm
g Width excluding journal	722 mm
e Width from center line	522 mm

Piston-Ø	Inch	2	2.5	3	3.5	4	4.5	5
	mm	50.8	63.5	76.2	88.9	101.6	114.3	127
Operat. Pressure	bar (psi)	350 (5,077)	325 (4,714)	225 (3,264)	165 (2,394)	123 (1,784)	100 (1,450)	80 (1,160)
<b>Revolutions</b>		<b>Pumping Rate l/min</b>						
340 min <sup>-1</sup>		248	388	558	760	992	1,256	1,425
310 min <sup>-1</sup>		226	535	509	693	905	1,145	1,188
300 min <sup>-1</sup>		219	342	493	670	876	1,108	950
200 min <sup>-1</sup>		146	228	328	447	584	739	713
150 min <sup>-1</sup>		109	171	246	335	438	554	475
100 min <sup>-1</sup>		73	114	164	223	292	369	238
50 min <sup>-1</sup>		36	57	82	112	146	185	119

**Data Performance**

Weight	approx. 1,500 kg
Pumping Rate	up to 1,425 l/min
Drive Power	up to 250 kW
Fluids	Drilling Suspension, Bentonite Mixture
Fluid Temperature	up to 90 °C
Piston Force Max.	103,000 N
Stroke	127 mm